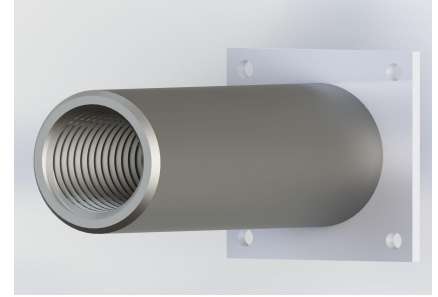




## RHINO Form Saver (RF Series)

The RHINO Formsavers effectively address the challenge of splicing rebar in segmental concrete construction. RHINO Formsavers eliminate the need to drill holes in expensive formwork for extending dowel bars. The RHINO Form Saver has a steel mounting plate that is attached to a standard RHINO coupler. RHINO Form Saver (RF Series) are available in sizes #4 thru #11.



## Features and Benefits

- Meets and exceeds ACI 318 Type 1 and Type 2
- Meets or exceeds international building codes
- Eliminates drilling holes in formwork
- Tapered thread is self aligning, eliminates cross threading, and is fast to install
- Maintains structural integrity and strength of rebar across construction joints
- Available in Black or Epoxy. Epoxy Finish Standard: ASTM® A775/A775M and AASHTO M284



## Typical Applications and Examples

- Bridge deck segmental construction
- Slurry Walls, columns to beams, core wall, shear wall
- Crane and temporary construction openings

Part Number	US Rebar Size	Metric Rebar Size	L1 (in)	D1 (in)	BD1 (in)	BG1 (in)	H (in)	Weight (lbs)
RS13F	#4	13mm	2.19	.75	.87	.43	2.25	.50
RS16F	#5	16mm	2.50	1.00	1.10	.31	2.25	.50
RS19F	#6	19mm	2.80	1.13	1.30	.20	2.25	.60
RS22F	#7	22mm	3.19	1.25	1.25	.69	2.25	.75
RS25F	#8	25mm	3.39	1.50	1.50	.38	2.25	.88
RS28F	#9	28mm	3.70	1.63	1.70	.31	2.38	1.20
RS32F	#10	32mm	4.25	1.75	1.87	.50	2.38	1.54
RS36F	#11	36mm	4.57	2.00	2.18	.21	2.38	2.30

